



**PITTSBURGH
REGION®**

NEXT IS NOW.

CASE STUDY

REVOLUTIONIZING ORTHOPAEDIC SURGERY

How Smith+Nephew Leverages Robotics Innovation
in Pittsburgh

An aerial photograph of a city skyline at sunset, with a river in the foreground and a bridge. The sky is a warm orange color, and the city buildings are silhouetted against the light. The river reflects the sky and the city lights. A bridge is visible in the middle ground, and a fountain is in the foreground on the right.

**“WE THINK OF THIS
AS A WORLD-CLASS
INNOVATION CENTER
AND A PLACE WHERE
MEDICAL EDUCATION AND
TRAINING TAKE PLACE.”**

– Vasant Padmanabhan, Ph.D.

Smith+Nephew President of Global ENT & Global R&D

Smith+Nephew is a London-based portfolio medical technology company focused on the repair, regeneration and replacement of soft and hard tissue. Its three global business units address solutions in orthopaedics, sports medicine & ENT, and advanced wound management.

In 2021, the company **chose Pittsburgh for its new 65,000-square-foot robotics research and design center**, capitalizing on the city's rapidly growing robotics ecosystem and medtech expertise. The state-of-the-art facility focuses on revolutionizing robotics technology, cutting-edge R&D, and advanced surgical training, driving orthopaedic surgery innovation.

See why Smith+Nephew chose Pittsburgh >>

WHY PITTSBURGH FOR SMITH+NEPHEW?

STRATEGIC ACQUISITION

Smith+Nephew's acquisition of **Blue Belt Technologies**, a Carnegie Mellon University (CMU) spinoff specializing in surgical robotics, positioned Pittsburgh as the ideal hub for its continued investment and innovation.

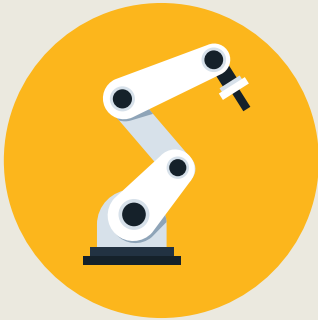
ROBUST ROBOTICS RESEARCH

Home to leading institutions like the **University of Pittsburgh** and **CMU**, the Pittsburgh region's reputation for robotics research and development is a significant draw.

DEEP PRIVATE-SECTOR NETWORK

Pittsburgh's vibrant private-sector network of robotics and AI-driven companies provides unmatched opportunities for cross-industry partnerships and cutting-edge innovation.

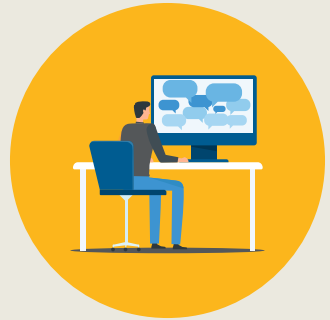
DETAILS OF SMITH+NEPHEW'S EXPANSION



Development and testing of **surgical robotics platforms** for hip and knee replacements.



Located in same development as Apple and Stack AV for **cross-industry collaboration**.



200 employees located at R&D center.

Discover more about why Pittsburgh is the place to grow at PittsburghRegion.org >>

WHY NEXT IS NOW IN THE PITTSBURGH REGION

Pittsburgh is famous for its industrial spirit, a legacy that fuels its current transformation into a hub for future-focused industries such as energy, advanced manufacturing, healthcare, life sciences, AI and robotics. Powered by top talent from its world-class educational institutions, the region has become a magnet for global industry leaders drawn to Pittsburgh for its unique blend of strategic location, cutting-edge innovation, and collaborative ethos.





Montreal

Toronto

Boston

Buffalo

Detroit

Cleveland

325 miles

567 miles

New York

460 miles

285 miles

370 miles

Philadelphia

246 miles

Baltimore

Indianapolis

Columbus

Washington D.C.

Cincinnati

Nashville

449 miles

Charlotte

687 miles

Atlanta



COMPANIES BUILDING IT HERE



AI & ROBOTICS EXCELLENCE

Some call it Roboburgh. Some call it Robotics Row. We call it Pittsburgh. No matter the name, it is at the intersection of the best talent and biggest names in tech, making the region a world leader in robotics and autonomy.



#1

undergrad
& graduate

AI programs

(Carnegie Mellon,
U.S. News & World Report)



100

robotics
companies



2

Tier 1 research
universities

(Carnegie Mellon &
University of Pittsburgh)

EXCEPTIONAL TALENT

In the Pittsburgh region, people are the stars. They solve the world's toughest problems, build iconic companies and inspire by making an impact.

13,000+

AI & Robotics
industry employment

Top 5

city for
tech worker
momentum

(WSJ, 2023)

20+

academic &
research centers

#1

undergrad
computer
engineering
program

(Carnegie Mellon,
U.S. News & World Report)

**PITTSBURGH
REGION®**

NEXT IS NOW.



Find out more about doing business in
Pittsburgh at PittsburghRegion.org. >>