



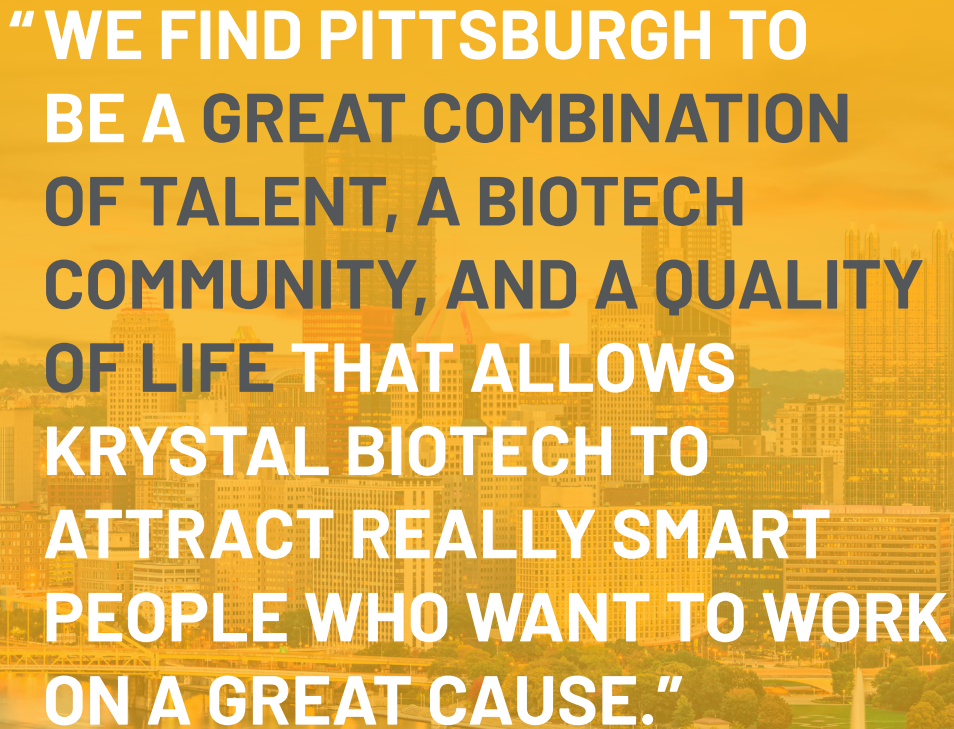
**PITTSBURGH
REGION®**

NEXT IS NOW.

CASE STUDY

FROM LAB TO LIFE CHANGING

Why Krystal Biotech is Advancing Gene Therapy
in Pittsburgh



**“WE FIND PITTSBURGH TO
BE A GREAT COMBINATION
OF TALENT, A BIOTECH
COMMUNITY, AND A QUALITY
OF LIFE THAT ALLOWS
KRYSTAL BIOTECH TO
ATTRACT REALLY SMART
PEOPLE WHO WANT TO WORK
ON A GREAT CAUSE.”**

– Krish Krishnan,
CEO, Krystal Biotech

Krystal Biotech is a biotechnology company focused on developing and commercializing gene therapy medicines for patients suffering from rare diseases. Most notably, the company developed the first and only FDA-approved drug to treat Dystrophic Epidermolysis Bullosa (DEB). From concept to commercialization, the company started and scaled in Pittsburgh.

In 2020, Krystal Biotech invested \$90 million in a 100,000-square-foot cGMP facility in Pittsburgh, expanding in the region beyond its existing headquarters and lab space on the city's South Side. The state-of-the-art location will allow for the full-integration of all components of the supply chain, from starting materials to patient experience.

See why Krystal Biotech chose Pittsburgh >>

WHY PITTSBURGH FOR KRYSTAL BIOTECH?

ESTABLISHED TALENT POOL

The region's universities annually produce around **13,000 healthcare and life science graduates**, providing a continuous influx of skilled professionals.

THRIVING RESEARCH ENVIRONMENT

The region is home of anchor institution **University of Pittsburgh**, which ranks 9th nationally in NIH funding and 7th nationally in R&D expenditures.

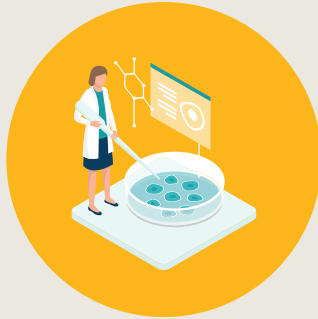
THE REGION HAS ARRIVED

For many years, Pittsburgh was identified as simply an emerging life sciences market. But in recent years, JLL (2022) and CBRE (2023) ranked Pittsburgh in their **top 25 overall markets**.

DETAILS OF KRYSTAL BIOTECH EXPANSION



Largest biotech investment in region's history.



This is Krystal's **second commercial gene therapy facility** in the region.



200 new jobs created at full capacity.

Want to join Krystal Biotech and other industry leaders in Pittsburgh? Find out more at PittsburghRegion.org >>

WHY NEXT IS NOW IN THE PITTSBURGH REGION

Pittsburgh is famous for its industrial spirit, a legacy that fuels its current transformation into a hub for future-focused industries such as energy, advanced manufacturing, healthcare, life sciences, AI and robotics. Powered by top talent from its world-class educational institutions, the region has become a magnet for global industry leaders drawn to Pittsburgh for its unique blend of strategic location, cutting-edge innovation, and collaborative ethos.







COMPANIES BUILDING IT HERE



LIFE SCIENCES EXCELLENCE

From the polio vaccine to precision medicine, Pittsburgh continues to transform medical impossibilities into reality. The region's powerhouse healthcare systems, world-class universities, and innovative companies are advancing the future of medicine through therapeutics, clinical research, and cutting-edge medical devices.



#9

in NIH Funding

(University of
Pittsburgh,
2024)



#7

in R&D expenditure

(University of
Pittsburgh,
2024)



2

Tier 1 research
universities

(CMU & PITT)

THE SPACE TO GROW

While life sciences hubs face space constraints, Pittsburgh is actively expanding its footprint with strategic developments that support companies at every stage.

The Assembly:

355,000 sf of biotech lab and office spaces.

The Riviera:

160,000 sf of lab and office space with flexible configurations.

BioForge:

185,000 sf of wet lab, incubation and biomanufacturing space.



**PITTSBURGH
REGION®**

NEXT IS NOW.

Find out more about doing business in
Pittsburgh at PittsburghRegion.org. >>