

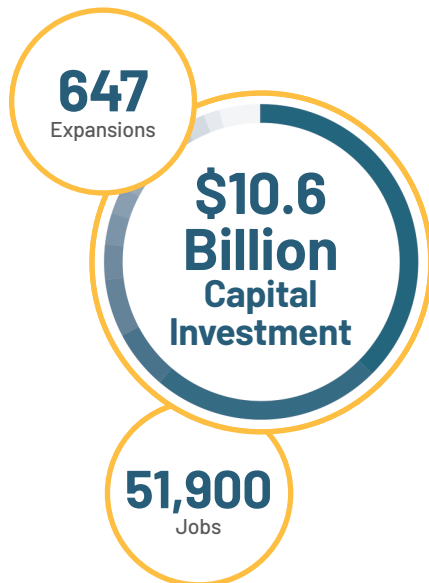
# The creators, innovators & inventors make here

Our expertise in advanced materials, engineering, smart factories and R&D has made Pittsburgh a production space and lab for industries like additive manufacturing, metals, coatings and chemicals.

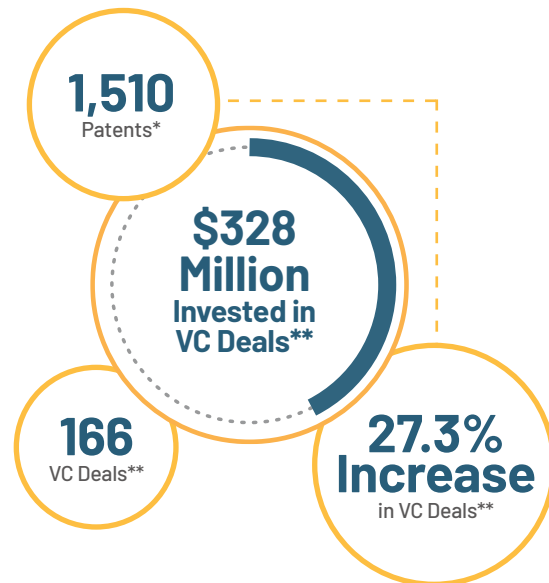
## Did you know?

Momentum in manufacturing is palpable in the Pittsburgh region.

### Deals in the Past 10 Years



### Innovation in Manufacturing



\*Past 10 Years    \*\*Past 5 Years

## Manufacturing Foundation



**2,800**  
Manufacturing  
Establishments



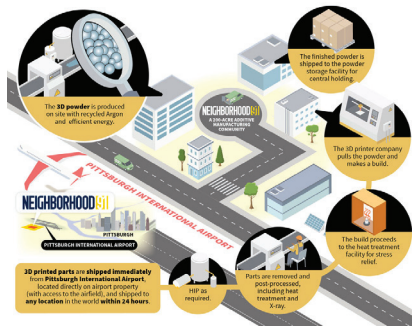
**95,000**  
Employed in  
Manufacturing



**5,200**  
Grads in Manufacturing-  
Related Fields Annually



## Strong Anchors



**Neighborhood 91** is located at the Pittsburgh International Airport and is the first development in the nation to locate and connect all components of the additive manufacturing supply chain into a production ecosystem.



**Carnegie Mellon University (CMU)** is a global leader in robotics, AI, materials science and additive manufacturing R&D.

- **The Advanced Robotics for Manufacturing (ARM) Institute** is dedicated to asserting U.S. leadership in manufacturing through robotics and workforce. 275 corporate, government and educational members have pledged \$250 million to R&D for robotics systems in manufacturing.
- **The Manufacturing Futures Initiative (MFI)** aims to accelerate the process of discovery to commercialization in manufacturing through end-to-end data collection and analysis.



**University of Pittsburgh's Ansys Additive Manufacturing Research Lab** at the university's **Swanson School of Engineering** advances manufacturing research with a primary focus on additive manufacturing of metal, polymer, and composite materials.

**America Makes** is the nation's leading public-private partnership for additive manufacturing and 3D printing technology research, discovery, creation and innovation. The Institute is located in nearby Youngstown, Ohio.

**National Center for Defense Manufacturing and Machining (NCDMM)** delivers innovative and collaborative manufacturing solutions by identifying the needs, partners, technologies, and processes needed to attain optimal solutions for their customers.

**Catalyst Connection** provides consulting and training services to manufacturers in the Pittsburgh region and received a \$5 million grant from the Department of Defense to strengthen defense manufacturing capabilities through workforce training and advancement of new technologies.



## Building It Here



**Elliot Group**  
\$60 million, new testing complex for cryogenic pumps and extenders



**Wabtec Corporation**  
Opened an additive manufacturing center at Pittsburgh International Airport's Neighborhood 91 to produce rail car parts



**Shell Polymers Innovation Center**  
85,000-square-foot facility including analytical and testing labs and an applications hall for research into polymers